

THE FIX & mini Fix BY

PROBABLY THE GREATEST BOLT-ACTION FIREARM EVER MADE.

SPECS	308 WIN	6.5 CREEDMOOR	224 VALKYRIE	300 BLK
CALIBER	308 WIN	6.5 CREEDMOOR	224 VALKYRIE	300 BLK
BARREL LENGTH	16 in	22 in	22 in	8 in
TWIST RATE	1:10	1:7	1:6	1:5
MUZZLE THREAD	5/8-24	5/8-24	1/2-28	5/8-24
MUZZLE DEVICE	CHERRY BOMB	CHERRY BOMB	CHERRY BOMB	CHERRY BOMB
LENGTH (FOLDED)	25.75 in	31.75 in	31 in	17.13 in
LENGTH (OPEN)	35.0 - 36.5 in	41.0 - 42.5 in	40 - 41.5 in	26.75 in
WEIGHT	6.2 lbs	7.7 lbs	7.4 lbs	4.7 lbs
TRIGGER	TWO-STAGE	TWO-STAGE	TWO-STAGE	TWO-STAGE

LAWYER SHIT

⚠️ BEFORE USING THIS FIREARM: BE CERTAIN YOU HAVE READ AND UNDERSTAND THE MANUAL AND THE ACCOMPANYING "FINE PRINT" SHEET. FAILURE TO DO SO CAN RESULT IN PROPERTY DAMAGE, SERIOUS INJURY AND/OR DEATH. USE EXTREME CARE AND CAUTION WHEN HANDLING ANY FIREARM.

⚠️ DO NOT FIRE ANY CARTRIDGE OTHER THAN THE ONE MARKED ON THE BARREL OF THIS FIREARM

⚠️ ONLY USE SAAMI / CIP APPROVED AMMUNITION THAT MATCHES THE CHAMBER OF THIS FIREARM.

STATE FIREARM LAWS

⚠️ Q ONLY SHIPS TO STATES THAT ARE COMPLIANT WITH OUR PRODUCTS. WITH THAT SAID, SOME STATES ARE LESS AWESOME THAN OTHERS.

⚠️ PLEASE REVIEW AND FULLY UNDERSTAND YOUR LOCAL, STATE AND FEDERAL LAWS AND REGULATIONS BEFORE USING THIS FIREARM. WE ENCOURAGE YOU TO DO YOUR HOMEWORK AND USE YOUR FIREARMS IN ACCORDANCE WITH THE LAW.

For information about firearm laws in your state, visit www.nraila.org/gun-laws/state-gun-laws

FIREARM SAFETY 101

⚠️ PAY ATTENTION, THESE ARE IMPORTANT.

1. Treat every firearm as if it were loaded.
2. Always point your firearm in a safe direction.
⚠️ A SAFE DIRECTION MEANS ZERO INJURY TO YOURSELF AND OTHERS, AND THE LEAST AMOUNT OF PROPERTY DAMAGE WILL OCCUR IF THE FIREARM WERE TO BE DISCHARGED.
3. Keep your finger off the trigger until you are on target and ready to fire.
4. Keep the safety in the "safe" position until you intend to fire.
5. Be aware of what is between you and your target, and what lies beyond your target.
6. If any of these safety rules do not make sense to you, please stop and seek professional help from a qualified firearms instructor.

THE FIX & mini FIX are chassis-less, magazine fed, 45° throw bolt-action firearms intended for use by hunters, competitors, recreational shooters, and armed professionals alike. The unique one-piece receiver provides superior rigidity over multi-piece platforms and chassis, while reducing the amount of bulk and weight common in traditional bolt-action platforms. The receiver houses the trigger mechanism, bolt assembly, and barrel. Attached to the receiver are the grip, folding brace / adjustable stock, handguard, and continuous (zero MOA) M1913 picatinny top rail. The Fix and mini FIX use an AR style fire control safety selector and grip, and are compatible with SR25 or AR15 pattern magazines, respectively.

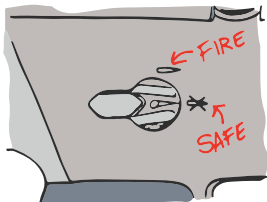
- | | |
|----------------------------------|---|
| 1. The FIX or mini FIX | 5. Locking Device |
| 2. SR25 or AR15 Pattern Magazine | 6. Owner's Manual <i>(the thing in your hand)</i> |
| 3. 2.6-in Accessory Rail | 7. Warranty Card |
| 4. T-25 Torx Wrench | |

1. MUZZLE DEVICE
2. BARREL
3. HANDGUARD
4. M1913 TOP RAIL
5. RECEIVER
6. TRIGGER
7. FIRE CONTROL (SAFETY) SELECTOR
8. GRIP
9. BOLT ASSEMBLY
10. BOLT STOP BUTTON
11. BOLT HANDLE
12. MAGAZINE RELEASE BUTTON
13. FOLDING STOCK or BRACE
14. ADJUSTABLE RECOIL PAD ▲
15. LENGTH OF PULL ADJUSTMENT WHEELS ▲
16. QD SLING CUP ▲
17. ADJUSTABLE CHEEK WELD ▲
18. STOCK / BRACE HINGE



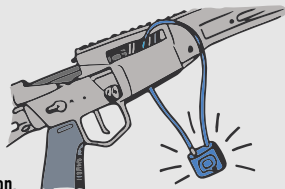
▲ NOT APPLICABLE FOR PISTOLS

1. The Fix & mini FIX are equipped with an ambidextrous fire control safety selector.
2. There are two safety selector positions:
SAFE: The selector lever is parallel to the bore and mechanically blocks the trigger.
FIRE: The selector lever is NOT parallel to the bore.
3. To operate this lever, simply rotate it to the desired position as indicated on the receiver.



▲ MAKE SURE THE FIREARM IS UNLOADED.

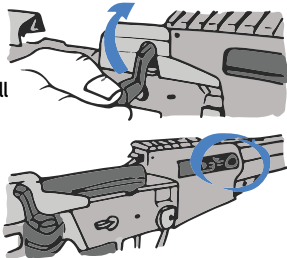
1. Place the safety selector in the safe position.
2. Depress the magazine release button and remove the magazine.
3. Raise the bolt handle until it stops.
4. Pull the bolt assembly to its most rearward position.
5. Perform a visual and physical inspection of the chamber to ensure it is clear of any cartridges, spent cases or other obstructions.
6. With the bolt assembly in the rearward position, feed the opened cable lock through the ejection port window and into the magazine well.
7. Connect both ends and lock the device. Give it a tug to make sure it's locked.



▲ STORE THE CABLE LOCK KEYS IN A SAFE PLACE INACCESSIBLE TO CHILDREN OR ANYONE ELSE WHO (OR WHOM) YOU DON'T WANT TO PUT THEIR GRUBBY HANDS ON YOUR FIREARM.

▲ ALWAYS WEAR PERSONAL PROTECTIVE EQUIPEMENT WHEN HANDLING A FIREARM. THIS INCLUDES EYE PROTECTION, HEARING PROTECTION (EITHER ATTACHED TO THE MUZZLE OR YOUR HEAD), GLOVES IF NECESSARY, AND AS ALWAYS, USE COMMON SENSE.

1. Point the muzzle in a safe direction.
2. Place the safety selector in the safe position.
3. Raise the bolt handle up until it stops and then pull it to the most rearward position.
4. Ensure the firearm is clear of any obstructions by visually and physically inspecting the barrel's chamber, the magazine well, and the bolt face.



CONTINUES ON NEXT PAGE...

1. Insert a loaded magazine into the magazine well until fully seated. Pull down on the magazine to ensure that it is properly seated and engaged on the magazine catch.
2. Push the bolt handle forward to strip the top cartridge off the magazine and feed it into the chamber.
3. When chambered, rotate the bolt handle down until it stops.
4. Identify your target through your optic.
5. With your thumb, rotate the safety selector to the fire position.
6. Slowly place your finger on the trigger.
7. Slowly pull the trigger to the rear while maintaining your optic on target.

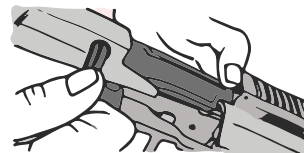
▲ BY NOW YOU MAY HAVE NOTICED OUR A WICKED AWESOME 2-STAGE TRIGGER. THIS TRIGGER ALLOWS FOR PRECISION TRIGGER CONTROL WITHOUT INFLUENCING THE MUZZLE ON YOUR INTENDED TARGET. OKAY... BACK TO SHOOTING.

1. Once the rifle fires, and your dinner has stopped running, place the safety selector to the safe position.
2. Celebrate!

1. Point the muzzle in a safe direction.
2. Ensure the safety selector is in the safe position. If it's not, do that now.
3. Depress the magazine release button and remove the magazine.
4. Rotate the bolt handle up until it stops.
5. Pull the bolt assembly to the most rearward position and extract the spent cartridge case.
6. Ensure the firearm is unloaded by visually and physically inspecting the barrel's chamber, the magazine well, and the bolt face.
7. Push the bolt assembly forward until it stops and lock it by rotating the bolt handle down.

▲ IN CASE YOU HAVEN'T FIGURED IT OUT YET, THIS IS A GOOD TIME TO PERFORM YOUR VISUAL AND PHYSICAL INSPECTION BEFORE TAKING YOUR RIFLE APART.

1. Fold the stock halfway. You'll understand soon enough.
- ▲ NOT SURE HOW TO FOLD THE STOCK? SKIP AHEAD A FEW SECTIONS AND EDUCATE YOURSELF.
2. Unlock the bolt assembly by raising the handle up.
3. Finish folding the stock if you'd like.
4. Pull the unlocked bolt assembly to the rear while pressing down on the bolt stop button.
5. With the bolt stop button in the down position, remove the bolt assembly from the receiver.

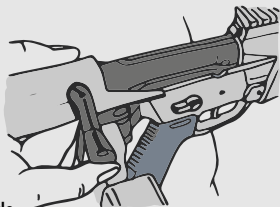


BARREL

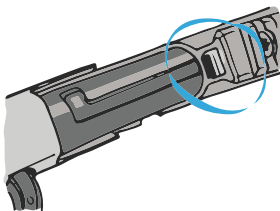
1. Using your favorite copper solvent and with all of your knowledge gained from the darkest corners of the internet, clean your bore with an appropriately sized patch and copper or nylon bore brush for your specific caliber.
2. Clean your chamber with an appropriately sized chamber brush and mop.

BOLT ASSEMBLY

1. Wipe down all exterior surfaces with a rag and your preferred firearm specific cleaning oil.
2. Grease all bearing surfaces to include the bolt, bolt body, shroud rails, and bolt handle knuckle.



1. With the stock folded halfway, and with the bolt in the raised position, align the bolt assembly's shroud rails with the corresponding rails on the receiver.
2. Insert the bolt assembly into the back of the receiver ensuring the bolt stop channel is aligned with the bolt stop button.
3. Once fully inserted, lock the bolt by rotating the bolt handle down.
4. Fold or unfold the stock to your desired position.

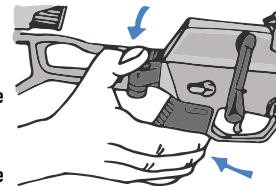


NOW LET'S SEE IF YOU PUT IT BACK TOGETHER CORRECTLY...

1. Point the firearm in a safe direction.
2. Unlock the bolt and cock the striker by lifting the bolt handle.
3. Pull the bolt assembly to the most rearward position, ensuring the bolt stop does its job.
4. Perform a visual and physical inspection of the firearm before performing a function check to ensure that the firearm is unloaded and safe.
5. Push the bolt assembly back to its most forward position and lock the bolt by rotating the bolt handle down.
6. Rotate the fire control safety selector to fire.
7. With the rifle pointed in a safe direction, slowly pull the trigger until the striker is released. If all goes well, you will hear and feel a "click".
8. Place the fire control safety selector in the safe position.
9. Repeat steps 2 through 5.
10. With the safety selector in the safe position, attempt to pull the trigger. If all goes well, you will hear and feel nothing.

FOLDING / UNFOLDING THE STOCK

1. To fold the stock, push down on the folding hinge pin to overcome the spring and unlock the stock.
2. To make this easier, pull up from the bottom of the rifle at the same time.
3. We like to pull up underneath the trigger guard with our fingers while pressing down on the hinge pin with the same hand's thumb.



▲ **DON'T WORRY, THIS GETS EASIER WITH TIME. UNTIL THEN, JUST TAKE COMFORT IN KNOWING THAT KEVIN'S 12-YEAR-OLD DAUGHTER CAN DO IT.**

4. Now that you figured that out, this is the easy part. To unfold it, just pull on the stock and rotate it to the unfolded position until it locks.

COMB HEIGHT (CHEEK WELD) ADJUSTMENT

1. Using a T-25 Torx bit, loosen the adjustment clamp on the stock frame between the adjustment rods.
2. Adjust the height of the cheek piece to your liking.
3. Retorque the clamp to 15 in-lbs.

LENGTH OF PULL (LOP) ADJUSTMENT

1. Using a T-25 Torx bit, loosen the adjustment clamp on the stock frame between the LOP adjustment rods.
2. Loosen the two adjustment wheels and slide the recoil pad until the LOP is to your liking.
3. Retorque the clamp to 15 in-lbs.
4. Tighten the adjustment wheels against the stock frame.

RECOIL PAD ADJUSTMENT

1. Depress the recoil pad adjustment button and slide the pad up or down to your desired position.
2. Release the adjustment button and ensure that the pad is locked in the desired position.

ACCESSORIES

1. Install rail-mounted accessories in any orientation onto the handguard at 50 in-lbs. using a T-25 Torx bit and the provided hardware.
2. For current accessories compatible with Q-Sert handguards, visit www.liveQordie.com

SEE BACK OF THIS MANUAL FOR A COMPLETE TORQUE SPEC CHART.

FASTENER	SIZE	TORQUE	UNITS
GRIP SCREW	T-25	50	IN-LB
CHEEK / LOP CLAMPS	T-25	15	IN-LB
BUTT ROD SCREWS	T-25	25	IN-LB
BARREL NUT	*	35	FT-LB
BARREL PINCH	T-25	40	IN-LB
HANDGUARD SCREWS	T-25	50	IN-LB
TOP RAIL SCREWS	T-25	50	IN-LB
CHERRY BOMB	1/2 IN	30	FT-LB

* BARREL NUT TOOL CAN BE PURCHASED AT WWW.LIVEQORDIE.COM



UNPOSSIBLE

MADE PROUDLY IN NEW HAMPSHIRE / www.liveQordie.com



THESE GUYS WILL BUILD IT RIGHT. IF YOU GOT ANY ISSUES,
LET ME KNOW AND I'LL WHIP THOSE PECKERHEADS INTO SHAPE.

- KEN

Reach me at KEN@KEVINWASANACCIDENT.COM

FOR WARRANTY INFORMATION, PLEASE REFER TO THE ACCOMPANIED "FINE PRINT" CARD.