

# THE SIDE CHICK

MAKING ACTIONS GREAT AGAIN SINCE 2019 AND BEYOND

## SPECS

WEIGHT - 2.6 lbs	LENGTH OPEN - 35.5" - 37.5"
HEIGHT - 2.88"	LENGTH FOLDED - 26.25"
WIDTH OPEN - 1.75"	HANDGUARD - 15.25" (Ø 1.20")
WIDTH FOLDED - 2.75"	TOP RAIL - 12"

## ABOUT THE SIDE CHICK

The SIDE CHICK rifle chassis is a modular precision rifle chassis for short action Remington 700 actions and other third party actions using the Remington 700 footprint.

The SIDE CHICK shares many of the same features as the THE FIX; a fully-adjustable side folding stock that locks the bolt handle, an aluminum center section, a free-floating handguard, removable zero-MOA M1913 picatinny top rail, ambidextrous magazine release, and AR grip compatibility, all of which are constructed of high-strength glass filled nylon, stainless steel or clear anodized aircraft grade aluminum.

## FIREARM SAFETY 101

**▲ BEFORE HANDLING FIREARMS: BE CERTAIN YOU HAVE READ AND UNDERSTAND THE MANUAL. FAILURE TO DO SO CAN RESULT IN PROPERTY DAMAGE, SERIOUS INJURY AND/OR DEATH. USE EXTREME CARE AND CAUTION WHEN HANDLING ANY FIREARM.**

1. Treat every firearm as if it were loaded.
2. Always point your firearm in a safe direction.

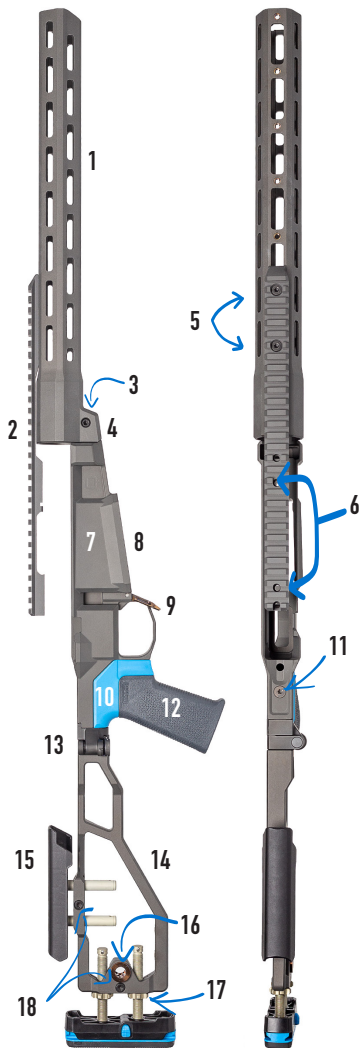
**▲ A SAFE DIRECTION MEANS ZERO INJURY TO YOURSELF AND OTHERS, AND THE LEAST AMOUNT OF PROPERTY DAMAGE WILL OCCUR IF THE FIREARM WERE TO BE DISCHARGED.**

3. Keep your finger off the trigger until you are on target and ready to fire.
4. Keep the safety in the "safe" position until you intend to fire.
5. Be aware of what is between you and your target, and what lies beyond your target.
6. If any of these safety rules do not make sense to you, please stop and seek professional help from a qualified firearms instructor.

## WHAT'S IN THE BOX?

- |                                |                                    |
|--------------------------------|------------------------------------|
| 1. THE SIDE CHICK CHASSIS      | 5. 8-40 TOP RAIL SCREWS (x4)       |
| 2. AICS PATTERN 10 RD MAGAZINE | 6. T-15, T-25, AND T-30 TORX BIT   |
| 3. 1/4-28 ACTION SCREWS (x2)   | 7. MANUAL (THE THING IN YOUR HAND) |
| 4. 6-48 TOP RAIL SCREWS (x4)   | 8. WARRANTY CARD                   |

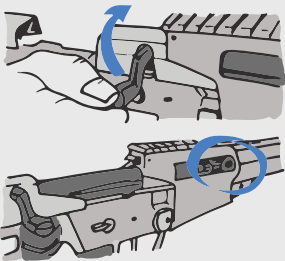
1. HANDGUARD
2. M1913 TOP RAIL
3. HANDGUARD DRIVE SCREW
4. CENTER SECTION PINCH SCREW
5. 10-32 RAIL SCREWS (x2)
6. 6-48 / 8-40 SCREWS (x4)
7. CENTER SECTION
8. MAGAZINE WELL
9. MAGAZINE RELEASE
10. GRIP EXTENSION
11. GRIP EXTENSION SCREW
12. GRIP
13. FOLDING HINGE
14. STOCK / BRACE ASSEMBLY
15. ADJUSTABLE CHEEK WELD ▲
16. QD SLING CUP ▲
17. LOP ADJUSTMENT WHEELS ▲
18. CHEEK / LOP CLAMPS ▲
19. ADJUSTABLE RECOIL PAD ▲



▲ NOT APPLICABLE FOR PISTOLS

### ▲ MAKE SURE THE FIREARM IS UNLOADED.

1. Place the safety selector in the safe position.
2. Remove the magazine.
3. Raise the bolt handle until it stops.
4. Pull the bolt assembly to its most rearward position.
5. Perform a visual and physical inspection of the chamber to ensure it is clear of any cartridges, spent cases or other obstructions.



### ▲ ALWAYS WEAR PERSONAL PROTECTIVE EQUIPMENT WHEN HANDLING A FIREARM. THIS INCLUDES EYE PROTECTION, HEARING PROTECTION (IF YOU'RE SHOOTING), GLOVES IF NECESSARY, AND AS ALWAYS, USE COMMON SENSE.

1. Point the muzzle in a safe direction.
2. Remove your action from its current stock per the original manufacturer's instructions.
3. Put that mediocre chassis in the trash.
4. Clean and inspect the bedding surface (bottom) of your action to ensure proper fitments into your SIDE CHICK. *(There's a joke in there somewhere...)*

### ▲ FOR YOUR INCONVENIENCE, THE SIDE CHICK COMES FULLY ASSEMBLED.

### ▲ DO NOT REMOVE THE GRIP SCREW. GRIP AND GRIP EXTENSION COME OFF TOGETHER AS A SUB-ASSEMBLY. SEE GRIP REPLACEMENT INSTRUCTIONS FOR FURTHER INFO.

#### REQUIRED TOOLS: T-25 & T-30 Torx Wrench

1. Remove the two 10-32 screws from the M1913 picatinny top rail.
2. Loosen the 10-32 cross "pinch" screw from the rear of the handguard.
3. Remove the 10-32 axial "drive" screw from the rear of the handguard.
4. From the top of the center section, remove the 1/4-28 grip extension screw located on top rear of chassis.
5. With the grip still installed onto the grip extension, remove the complete grip sub-assembly.

### ▲ TIP: USING NON-MARRING VICE JAWS, PLACE THE GRIP SUB-ASSEMBLY IN A VICE AND TAP THE CHASSIS OFF WITH A SOFT, NON-MARRING HAMMER. DO NOT HIT THE TRIGGER GUARD.

1. Drop (not literally) your barreled action into the SIDE CHICK's center section.

**▲ PRO TIP: IF YOU DID STEP #1 CORRECTLY, THE TRIGGER WILL BE INSIDE THE TRIGGER GUARD.**

2. Finger tighten the two 1/4-28 action screws into the action thru the bottom of chassis.
3. Ensure the recoil lug is seated rearward in the center section against the recoil lug stop surface. Snug up the front screw first, closest to the recoil lug. Then snug up the rear screw. Starting again with the front action screw, torque both action screws to 65 in-lb.
4. Install the grip sub-assembly. Align the grip extension with the corresponding rails on the center section's grip interface. Once aligned, you, tap the bottom of grip with a non-marring hammer to fully seat it into place. Once seated, install the 1/4-28 grip extension screw to 50 in-lbs through the top of the center section.
5. Slide the handguard over the barrel and finger tighten the 10-32 handguard drive screw.
6. Place the M1913 top rail on the action. Loosely install the four 6-48 or 8-40 screws (depending on you action) using blue Loctite #243 (not included).
7. Bias the top rail forward against the recoil lug so that it makes contact with the receiver, and torque the four 6-48 to 15 in-lb (or 8-40 screws to 20 in-lb).

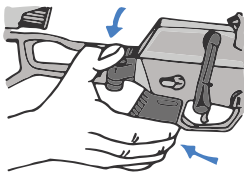
**▲ TIP: SNUG UP THE SCREW CLOSEST TO THE RECOIL LUG FIRST. THEN SNUG UP THE REMAINING SCREWS. REPEAT THIS ORDER WHEN APPLYING THE APPROPRIATE TORQUE.**

8. Install the two 10-32 top rail screws to the handguard. Lightly snug them up to rotationally align handguard to top rail.
9. Torque the handguard drive screw to 50 in-lbs.
10. Torque the handguard pinch screw to 50 in-lbs.
11. Torque the two 10-32 top rail screws to the 50 in-lbs.
12. Celebrate with a frosty beverage.

1. Remove the grip subassembly from the chassis as shown in steps 4 and 5 of the chassis disassembly section of this manual.
2. Remove the T-30 Torx 1/4-28 grip screw from the bottom of the grip.
3. Remove grip from extension and replace it with an AR compatible grip of your choice.
4. Re-install the T-30 Torx 1/4-28 grip screw into the bottom of the grip and torque to 50 in-lbs.

## FOLDING / UNFOLDING THE STOCK

1. To fold the stock, push down on the folding hinge pin to overcome the spring and unlock the stock.
2. To make this easier, pull up from the bottom of the rifle at the same time.
3. We like to pull up underneath the trigger guard with our fingers while pressing down on the hinge pin with the same hand's thumb.



**▲ DON'T WORRY, THIS GETS EASIER WITH TIME. UNTIL THEN, JUST TAKE COMFORT IN KNOWING THAT KEVIN'S 12-YEAR-OLD DAUGHTER CAN DO IT.**

4. Now that you figured that out, this is the easy part. To unfold it, just pull on the stock and rotate it to the unfolded position until it locks.

## COMB HEIGHT (CHEEK WELD) ADJUSTMENT

1. Using a T-25 Torx bit, loosen the adjustment clamp on the stock frame between the adjustment rods.
2. Adjust the height of the cheek piece to your liking.
3. Re-torque the clamp to 15 in-lbs.

## LENGTH OF PULL (LOP) ADJUSTMENT

1. Using a T-25 Torx bit, loosen the adjustment clamp on the stock frame between the LOP adjustment rods.
2. Loosen the two adjustment wheels and slide the recoil pad until the LOP is to your liking.
3. Re-torque the clamp to 15 in-lbs.
4. Tighten the adjustment wheels against the stock frame.

## RECOIL PAD ADJUSTMENT

1. Depress the recoil pad adjustment button and slide the pad up or down to your desired position.
2. Release the adjustment button and ensure that the pad is locked in the desired position.

FASTENER	SIZE	TORQUE	UNITS
GRIP SCREW	T-30	50	IN-LB
GRIP EXTENSION SCREW	T-25	50	IN-LB
CHEEK / LOP CLAMPS	T-25	15	IN-LB
HANDGUARD DRIVE SCREW	T-25	50	IN-LB
HANDGUARD PINCH SCREW	T-25	50	IN-LB
10-32 TOP RAIL	T-25	50	IN-LB
6-48 TOP RAIL SCREW	T-15	15	IN-LB
8-40 TOP RAIL SCREW	T-15	20	IN-LB
ACTION SCREWS	T-25	65	IN-LB



# UNPOSSIBLE

MADE PROUDLY IN NEW HAMPSHIRE / [www.liveQordie.com](http://www.liveQordie.com)

 [the\\_official\\_q](https://www.instagram.com/the_official_q)



THESE GUYS WILL BUILD IT RIGHT. IF YOU GOT ANY ISSUES, LET ME KNOW AND I'LL WHIP THOSE PECKER-HEADS INTO SHAPE.

- KEN

Reach me at [KEN@KEVINWASANACCIDENT.COM](mailto:KEN@KEVINWASANACCIDENT.COM)

FOR WARRANTY INFORMATION, PLEASE REFER TO THE ACCOMPANIED "FINE PRINT" CARD.